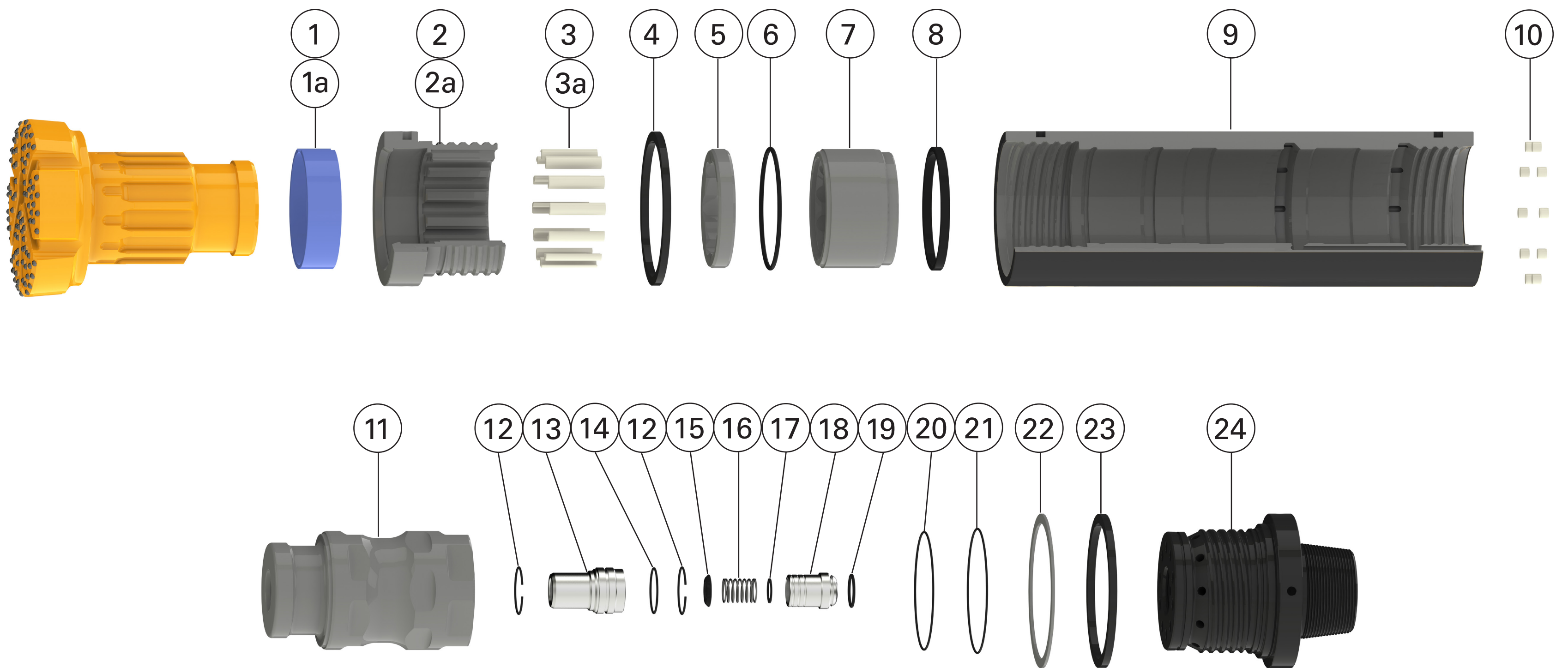


TerraRoc QL 300, QL 300S

Down-the-hole hammer



Ref.	Part	Prod. No.
1	Chuck bearing, QL 300	52339561
1a	Chuck bearing, QL 300 S	52339538
2	Chuck, QL 300	52339553
2a	Chuck, QL 300 S	52339520
3	Drive pin, QL 300 x12	52338738
3a	Drive pin, QL 300 S x18	52338738
4	Breakout washer	52347861
4a	Thrust washer, QL 300 S only, not shown	52339579
5	Bit retaining ring	52339512
6	Bearing retaining ring	52339884
7	Bearing	52339439
8	Bearing stop ring	52339546
9	Casing	52339397
10	Plug, casing x10	52339470
11	Piston	52339405
12	Guide retaining rings x2	52339082

Ref.	Part	Prod. No.
13	Guide	52339413
14	Guide O-ring	52339876
15	Check valve spring guide	52339454
16	Check valve spring	52339462
17	Check valve spring stop	52339447
18	Check valve	52339421
19	Check valve O-ring	52339868
20	Backhead O-ring front	52339850
21	Backhead O-ring rear	52339843
22	Casing washer	52339504
23	Breakout washer	52347861
24	Backhead	52339389
25	Lifting plug, not shown	52342169

Hammers	Prod. No.
QL 300, 16" Beco pin	52339363
QL 300 S, 16" Beco pin	52339371

9866 0198 01 2018.05

Finland
Pihtisulunkatu 1 A
33330 Tampere
Finland

UK
4 - 6 South Lumley Street,
Grangemouth FK3 8BT,
Scotland.

USA
7500 Shadwell Drive,
Roanoke, Virginia, 24019
USA



terrarcdrilling.com